

Combined Exit Button and Emergency Release Range



AEB31/BGU/PTE



AEB32/BGU/PTE



AEB33/BGU/TFE

The new Combined Exit Button and Emergency Releases are supplied with a high impact plastic Back Box designed to meet all types of applications.

Complies with Risk Assessment RA001, EN50133, Industry Codes of Practice. And Health and Safety Regulations having no sharp edges.

Touch Free Exit Button is ideal for High Sensitive and Public Areas because of its hygienic "NO TOUCH" operation.

Features & Benefits

Access Button:

- Robust design high impact plastic back box
- Double pole contact N/O N/C at 30v ac/dc
- Designed for greater than 1 million operations
- Etched legend
- Supplied with Security Screws

Emergency Release:

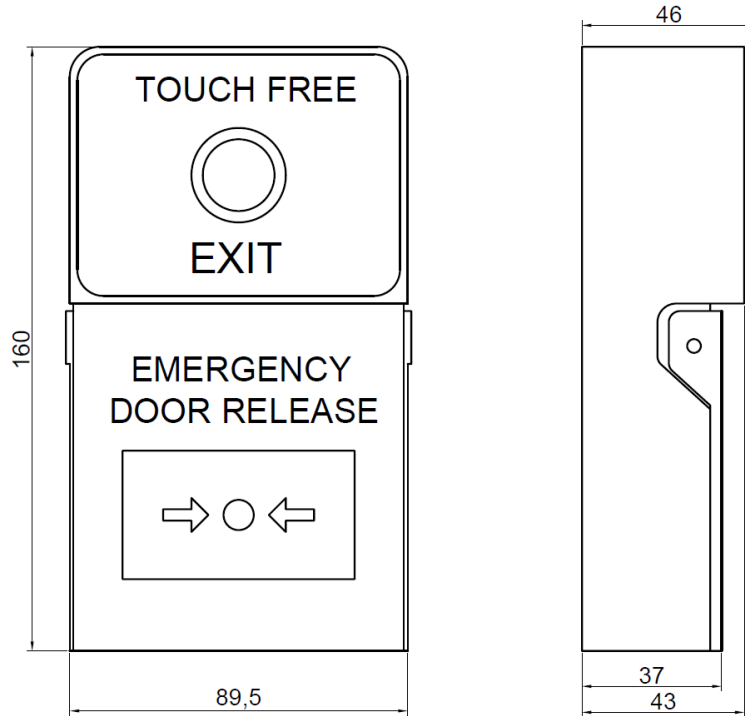
- Triple contact
- Audible LED warning
- Plastic front covers flips up for access to resettable emergency release
- Size – 160H x 90W x 42D mm

Complete Unit:

- All one colour
- Easy clean surface (ideal for Hospitals/Public areas)
- Easy cable entry from sides or rear
- Screw footprint for surface fitting onto standard back box
- Saves labour time on wiring
- Stainless Steel Button
- Internal use only
- All call points are resettable by key

Combined Exit Button and Emergency Release Range

Technical Drawing



Technical Specification

Input Voltage DC	12V / 24V
Quiescent Current	16mA / 20mA
Proximity Current	23mA / 30mA
Range	30 – 120mm
Maximum Output	1A@30V DC
Lifetime (Sensor)	100,000 hrs
Lifetime (Relay)	1 x 10 ⁷ Operations
Weight	0.30kg
Dimensions	L160mm x W46mm x H89.5mm

For further information contact:

Securefast plc
 Unit 6 & 7
 The Cedars Business Centre
 Avon Road, Cannock
 Staffordshire
 WS11 1QJ



Call > +44 (0) 1704 502801

Email > sales@securefast.co.uk

Visit > www.securefast.co.uk

Product Code

AEB31/BGU/PTE	Stainless Steel green dome button & green call point "PRESS TO EXIT"
AEB32/BGU/PTE	Stainless Steel large button & green call point "PRESS TO EXIT"
AEB33/BGU/TFE	Stainless Steel touch free button & green call point "TOUCH FREE EXIT"