

### APX-16 Waterproof IP65 Rated Keypad

**The APX-16 is a new generation multiple input keypad offering a standard 4-6 digit pin code with the option to include a proximity reader for up to 1200 users with the APX-16/PROX.**



The range supports pin only, card only or a combination of pin and card operation with two relay outputs, lock and alarm. The keypad accepts a 125KHZ EM proximity card and uses two zones. Zone 1 offers up to 1100 Pin & Card holders and Zone 2 allows up to 100 Pin & Card holders.

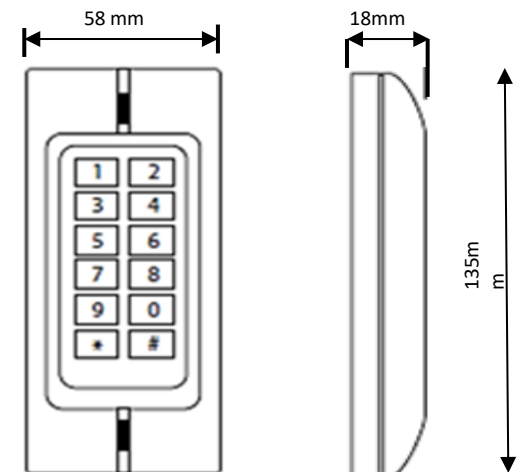
The APX-16 design has a lock output of up to 2 amps and an alarm output of 20 amps, both relays are normally open and closed settable. The keypads accept both; 12-18V ac and 12-24V dc power inputs.

The unit is IP65 rated which means it can be installed in the most extreme of environments as the wiring has total protection against the ingress of dust and the unit is protected against jets of water. The strong Zinc Alloy Electroplated case also offers a reasonable amount of protection against vandalism.

The keys are back lit for easy visibility in low lit areas such as porches, under canopies and in areas with little or no street lighting. The slim line keypad is just 58mm wide enabling it to be fitted to most architraves and comes with a two year warranty.

#### Features & Benefits

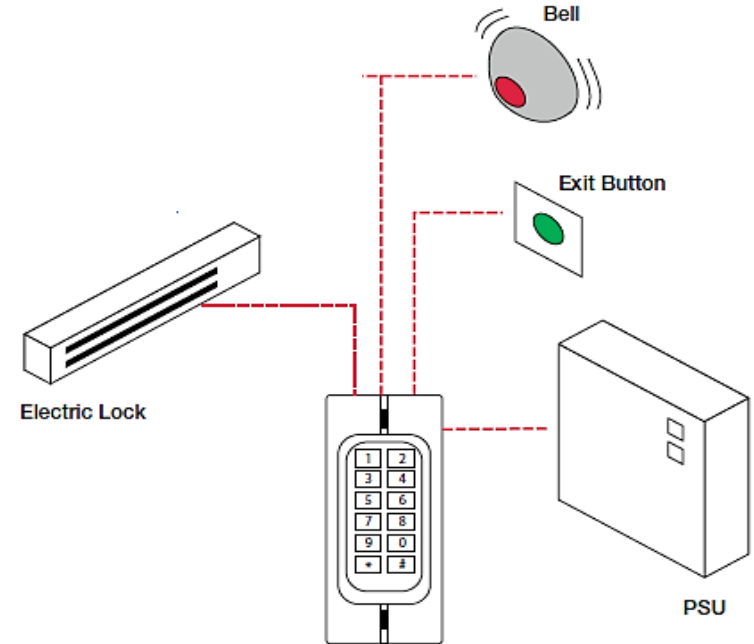
- Two relays operation, lock and alarm
- Pulse mode, Toggle mode
- Zone 1: up to 1100 Pin & Card holders
- Zone 2: up to 100 Pin & Card holders
- Standalone keypad card reader
- Pin length: 4-6 digits
- Card type: 125KHZ EM card
- Block enrolment, can enrol 1200 consecutive cards within 10 seconds
- Waterproof, conforms to IP65
- Strong Zinc Alloy Electroplated anti-vandal case
- 1200 uses, supports Card, PIN, Card + PIN
- Backlight keypad
- 12-18V ac and 12-24V dc power input



## APX-16 Waterproof IP65 Rated Keypad

### Technical Information

Code	APX16
Operating Voltage	12-18V ac & 12-24V dc
User Capacity	1200 (1100 for Zone 1, 100 for Zone 2)
Keypad	12 Keys, 2 x 6 digit
Card Type	EM 125 KHZ card
Card Reading Distance	3 – 6 cm
Active Current / Idle Current	<60mA / 25 ± 5mA
Lock Output Load	Max. 2A at 24V dc
Alarm Output Load	Max. 20A at 24V dc
Operating Temperature	-15° to 60°C
Operating Humidity	5% to 95% RH
Environment	Conforms to IP65
Adjustable Door Relay Time	0 – 99 seconds
Adjustable Alarm Time	0 – 3 minutes
Relay	2 relays, NO, NC, COM
Wiring Connections	Electric Lock, Exit Button, DOTL, External Sounder/Bell
Dimensions	L135 x W58 x D25 mm
Net Weight	550g



For further information contact:  
 Securefast plc  
 Unit 6 & 7  
 The Cedars Business Centre  
 Avon Road, Cannock  
 Staffordshire  
 WS11 1QJ



Call> +44 (0) 1704 502801

Email > sales@securefast.co.uk

Visit > www.securefast.co.uk